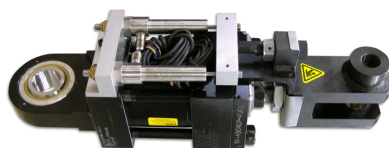


Frame 5001 Series M-R Gas Turbines: Hydraulically Actuated Products



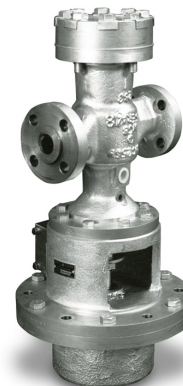
**8000/9000/9500 Series
Combined Control and Stop Valves**



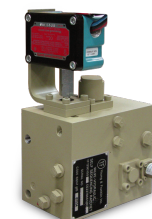
**7645 Series
Inlet Guide Vane Actuator**



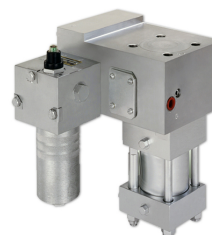
**7626 Series
IGV Controller Assembly**



**3937 Series
Liquid Fuel Oil Stop Valve**



**1290 Series
Hydraulic Ratchet
Sequencing Valve**



**7735 Series
Liquid Fuel Oil Bypass Valve**