

# Frame 6001FA Gas Turbines: Hydraulically Actuated Products



Stop/Ratio



3" Valve



3" Valve

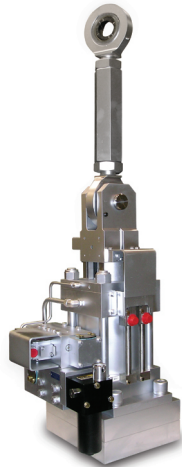


2" Valve

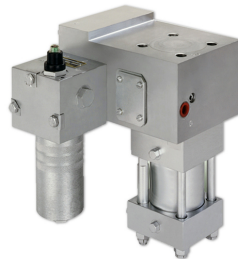


2" Valve

8580 Series Hydraulic Stop/Ratio and Gas Control Valves



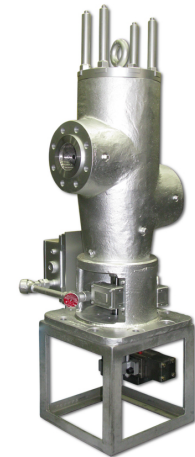
8277 Series  
Severe Service Inlet Guide Vane Actuator



7735 Series  
Liquid Fuel Oil Bypass Valve



6246 Series  
Liquid Fuel Bypass Valve



7552 Series  
Liquid Fuel Oil Stop Valve